

样例机参数

产品种类： 30 瓦皮秒绿光激光器

产品型号： Topaz 532-30

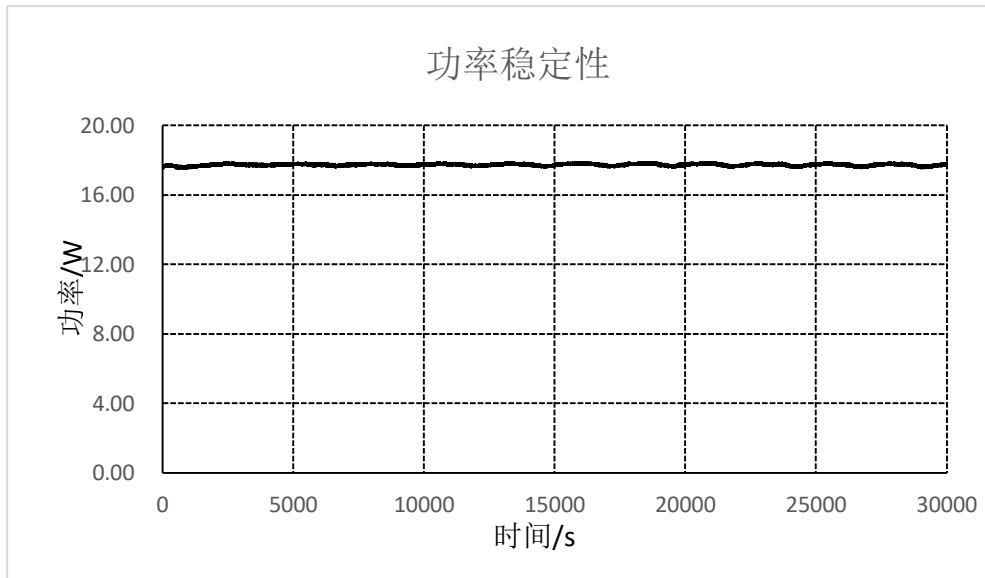
产品序列号：XXXXXXXXXX

测试人（签名）：XXX

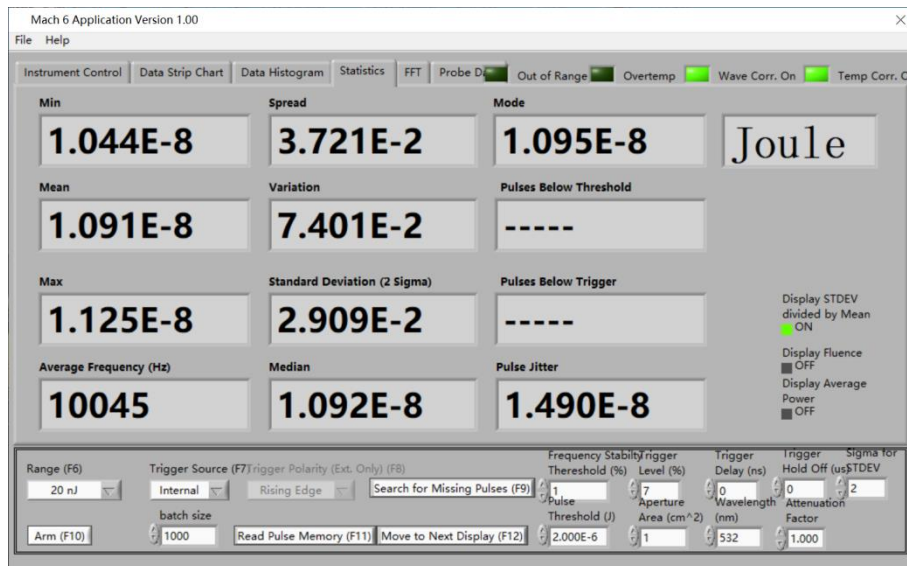
一、激光器性能测试

Parameters	Specifications	Tested data
Wavelength	532nm	532nm
Pulse repetition rate	Base Frequency at 800kHz, so single pulse – 800kHz selectable	By design
Pulse Width	<15ps	10ps
Average Power	>30.0W@800kHz	32.5W@800kHz
Maximum Pulse Energy	>37.5μJ@800kHz	40.6μJ@800kHz
Average Power Stability	<2.0%rms over 8hours	0.7%rms over 8hours
Pulse-to-Pulse instability	<3.0%rms	2.9%rms
Burst Mode	2-10 pulse selectable	2-10 pulse selectable
Spatial Mode	TEM <sub>00</sub> (M <sup>2</sup> <1.20)	(X/Y) 1.05/1.04
Beam Divergence	<2.0mrad(Full Angle)	0.6mrad
1/e <sup>2</sup> Beam Diameter	1.20± 0.25 mm@output window	1.42mm@output window
Beam Roundness	>85.0%	97.9%
Pointing stability	<50.0urad	3.1urad
Polarization Direction	Vertical	Vertical
Polarization Ratio	>100:1	728:1
Cooling	Water-cooling	Water-cooling
Ambient Temperature	15 – 30°C	15 – 30°C
Storage Temperature	-10 – 50°C	-10 – 50°C
Relative humidity	10%-80% (non-condensing)	10%-80% (non-condensing)
Warm-up Time (mins)	<20	15
Operating Voltage	110 – 260V/AC	110-260V/AC

二、功率稳定性测试

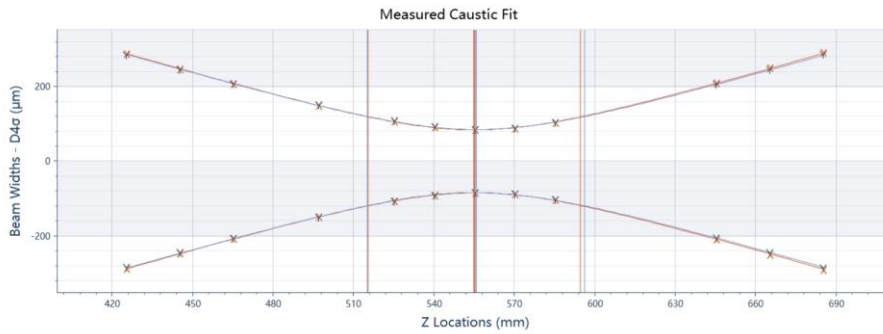
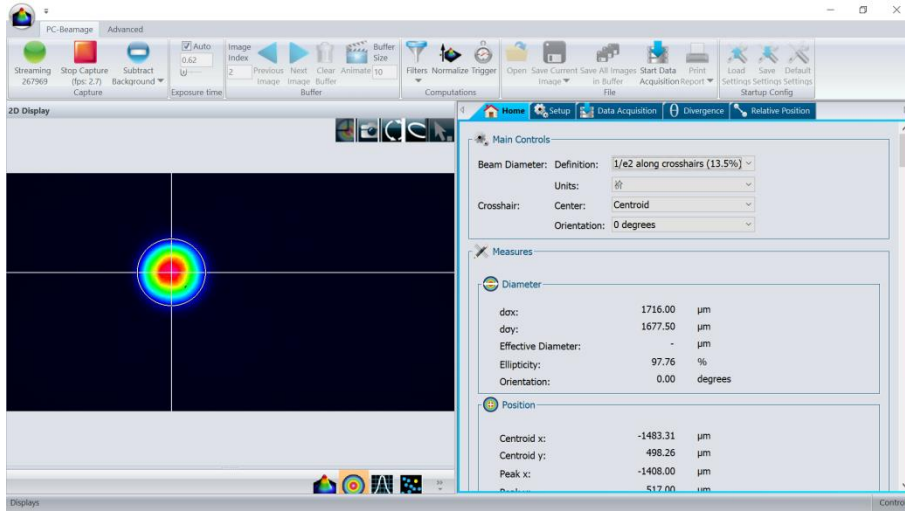


三、脉冲能量稳定性测试



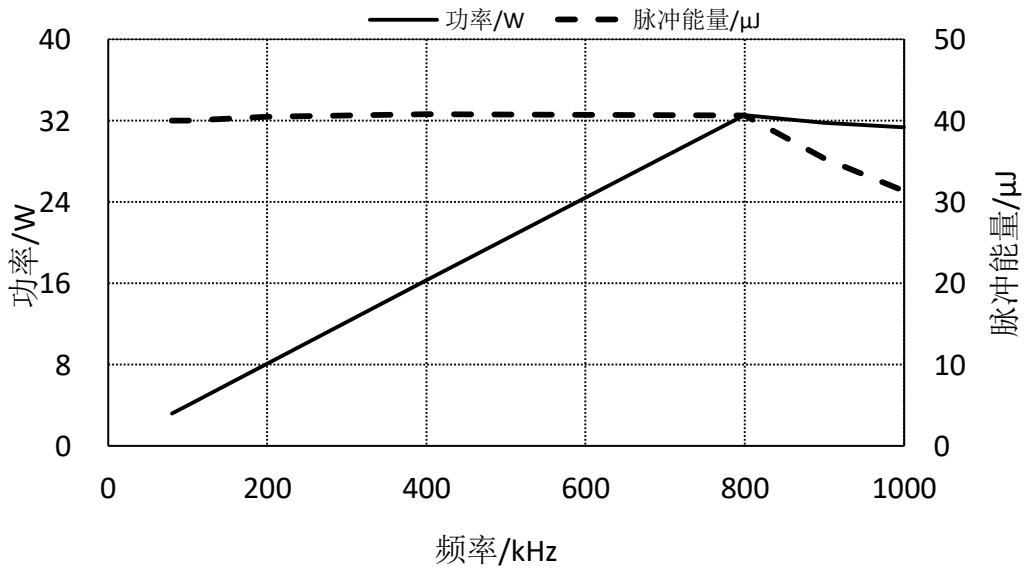
四、光斑质量数据

出光口 500mm



五、功率、脉冲能量随重频的变化

频率-功率



六、功率随能量百分比的变化

能量百分比-功率

